

# Company Profile

Associated Construction Co. (K) Ltd.



DESIGN AND BUILD

**ASSOCIATED CONSTRUCTION CO. (K) LTD**  
(CIVIL ENGINEERING CONTRACTORS)

Elgon Road, Upper Hill, P. O. Box 31114-00600, Nairobi, Kenya

Tel: 254 - 721-345416 / 254-733-271272

Email : [nsb@associated.co.ke](mailto:nsb@associated.co.ke) , [acckl@associated.co.ke](mailto:acckl@associated.co.ke)



# **TABLE OF CONTENTS**

**INTRODUCTION**

**COMPANY DETAILS**

**SCHEDULE OF MAJOR WORKS UNDERTAKEN**

**SCHEDULE OF PLANT AND EQUIPMENT**

## **INTRODUCTION**

Associated Construction Company (K) Ltd is a civil Engineering Construction Company offering a wide range of construction services tailored to add value to each project that the company is employed on.

The company combines local specialist contracting services with world class engineering firms in joint venture arrangement to produce a strong competitive advantage to both the company and for its clients.

The main areas of services are:

- a) Civil Engineering works in Roads, hard standing installations, river protection works.
- b) Bridge construction
- c) Marine works
- d) Geotechnical investigation
- e) Building and structural works.

### **Plant Resource Capacity**

In Civil Engineering works Associated Construction Co. Ltd maintains its own plant and equipment capable of undertaking heavy earthworks, road works, and Asphalt production and laying.

In bridge construction work Associated Construction Co. (K) Ltd has developed a wide range of construction equipment for temporary works in the form of pontoons, trestles jacking frames capable of handling any magnitude of bridge works in both concrete and steel.

Associated Construction Co. (K) Ltd also has a 40 Ton capacity crane, and elaborate gantry systems for effective construction working over difficult terrains.

Associated Construction Co. (K) Ltd maintains joint venture arrangements with M/s Dorman Long Technology Ltd of the U.K for consulting and contracting services in bridge construction. A joint venture arrangement is also maintained with M/s Yerevan Steel Construction Co. Ltd. of the United Arab Emirates Dubai for heavy steel fabrication works.

In marine construction Associated Construction Co. (K) Ltd maintains piling equipment capable of undertaking all forms of piling works for offshore structures.

The capability of piling includes concrete piles; bottom drives steel piles bored piles. Associated Construction Co. (K) Ltd also maintains a joint venture arrangement with M/s Maru piling and geotechnical services for piling works and geotechnical investigations.

In building and structural works, Associated Construction Co. (K) Ltd has maintained plant and equipment to cover both concrete and steel structures.

## COMPANY DETAILS

**NAME OF COMPANY:** Associated Construction Co. (K) Ltd  
**DATE OF INCORPORATION:** 18<sup>th</sup> June 1976 Registration No. C14635

Limited Liability Company Incorporated in the Republic of Kenya.

**AUTHORISED CAPITAL** US\$ 384,615.00

**PAID UP CAPITAL** US\$ 384,615.00

### DIRECTORS:

<u>Names</u>	<u>Nationality</u>	<u>Position</u>
K.S. BANSAL	British	Chairman
N.S. BANSAL	Kenyan	Managing Director

**REGISTRED OFFICE** Elgon Road, Upper Hill  
P. O. Box 31114 - 00600  
Tel: 0721 345416, 0733 271272  
Fax: 2715596  
Email: acckl@associated.co.ke,  
nsb@associated.co.ke

### **NAIROBI, KENYA**

**WORKSHOPS** Embakasi - Nairobi

**BRANCH OFFICE** Kibos, Kisumu

### **REGISTRATION**

Ministry of Roads Class A

Ministry of Public works Class A

Ministry of Water Development Class A

### **MEMBERSHIP**

Executive Member of the Roads and Civil Engineering Contractors Association (RACECA) Kenya.

Kenya Association of Building and Civil Engineering Contractors (KABCEC).

**AUDITORS**

VSC Kenya  
Certified Public Accountants (K)  
Posta Sacco Plaza, 15<sup>th</sup> Floor  
University Way  
P. O. 46986 00100  
Nairobi

**PRINCIPAL BANKERS**

Middle East Bank (K) Ltd  
Milimani Road Branch  
P.o. Box 47387 00100  
NAIROBI.

Bank of Africa Ltd  
Reinsurance Plaza, Taifa Road  
P.O Box 69562 - 00400

NAIROBI  
Kenya Commercial Bank  
Kencom House  
P. O. Box 48400 00100

NAIROBI

**SCHEDULE OF MAJOR WORKS UNDERTAKEN**

**a) SCHEDULE OF ONGOING PROJECTS**

**I CERTIFY THAT THE WORKS INDICATED HEREIN ARE BEING DONE BY US**

.....

**Signature**

.....

**Date**

**SCHEDULE OF MAJOR WORKS UNDERTAKEN**

**b) SCHEDULE OF MAJOR ROAD AND BRIDGE WORKS COMPLETED**

**I CERTIFY THAT THE WORKS INDICATED HEREIN WERE DONE BY US**

.....

**Signature**

.....

**Date**



## CONSTRUCTION TO BITUMEN STANDARD OF JUNCTION B3- NAIREGIE ENKARE ROAD (E445)



The contract comprised of construction to bitumen standard of 6km road with asphaltic concrete wearing course. The road base and sub base are in natural gravel material stabilized with cement. The works include drainage structures. Pipe culverts, box culverts and several bridges and box culverts.

Main contractor:

**ACCKL**

Client:

**Narok County**

Contract period

**10 Months from September 2014**

Contract sum:

**US\$ 4.5 million**

Contract status:

**Just Awarded**

Value of completed to date:

**Nil**

Physical Completion:

**Nil**



REHABILITATION OF CONTROL BUILDING DAM/ INTAKE ACCESS  
ROAD FOR TURKWEL POWER STATION



The contract comprised of construction to bitumen standard of 7km road with asphaltic concrete wearing course. The road base and sub base are in natural gravel material stabilized with cement. The works include drainage structures. Pipe culverts, box culverts and several bridges and box culverts.

Main contractor:

**ACCKL**

Client:

**Kenya Electricity Generating Co. Ltd**

Contract period

**12 Months**

Contract sum:

**US\$ 1.7 million**

Contract status:

**Just Awarded**

Value of completed to date:

**Nil**

Physical Completion:

**Nil**



## RECONSTRUCTION OF THE ROAD LINKING GITHURAI 44 TO GITHURAI 45 AND CONSTRUCTION OF ACCESS TO THIKA GREENS



The contract comprised of construction to bitumen standard of 3km road with asphaltic concrete wearing course. The road base and sub base are in natural gravel material stabilized with cement. The works include drainage structures. Pipe culverts, box culverts and several bridges and box culverts.

Main contractor:

**ACCKL**

Client:

**Nairobi Metropolitan**

Contract period

**18 Months from August 2013**

Contract sum:

**US\$ 3.2 million**

Contract status:

**Ongoing**

Value of completed to date:

**US\$ 1.9 million**

Physical Completion:

**60%**



## UPGRADING TO BITUMEN STANDARDS OF SIGALAGALA - MUSOLI -SABATIBUTERE ROADS (D260/E390)



The contract is comprised of upgrading to Bitumen standards of a 36 km road with asphalt concrete and single seal surface dressing on the carriage way with double seal surface dressing on the shoulders. The works also include improving the subgrade, lime improved subbase and cement improved base. The major work also includes construction of service roads, culverts, drainage and protection works.

Main contractor:

**ACCKL**

Client:

**Kenya Rural Roads  
Authority**

Contract period

**June 2012 to June 2015**

Contract sum:

**US\$ 25 million**

Contract status:

**On going**

Value of completed to date:

**US\$ 4.6 million**

Physical Completion:

**30%**

## CONSTRUCTION TO BITUMEN STANDARD OF BONDO SIAYA RANGALA ROAD



Earth works



Top soil stripping to spoil



Scaffolding and form work to bridge



Construction of box culvert

The contract comprised of construction to bitumen standard of a 45km road with asphaltic concrete wearing course. The road base and sub base are in natural gravel material stabilized with cement. The works include drainage structures. Pipe culverts box culverts and several bridges and box culverts

Main contractor:	ACCKL
Client:	Ministry of Roads
Contract period	October 2008 to date
Contract sum:	US\$ 20 million
Contract status:	Completed
Value completed to date:	US\$.20m
Physical completion:	100%

## CONSTRUCTION TO BITUMEN STANDARD OF EBUYANGU EKERO ROAD C33



Base stabilization with cement



Earthworks



Base priming



Surface Dressing

The contract comprised of construction to bitumen standard of a 30km road with 18km double surface dressing and 12km in asphaltic concrete. The road base and sub base are in natural gravel material stabilized with cement. The works include drainage structures. Pipe culverts box culverts and widening of 45m long bridge across Yala River.

The works are substantially complete and 85% of the road has already been opened to the traffic.

Main contractor:	ACCKL
Client:	Ministry of Roads and Public works
Contract period:	June 2007 to date
Contract sum:	US\$16 million
Contract status:	Completed
Value completed to date:	US\$16m
Physical completion:	100%



## EMERGENCY MAINTENANCE OF KISUMU-KAKAMEGA (A1) ROAD



The contract comprised of emergency maintenance of a 50km road with asphaltic concrete wearing course. The works include reinstatement or repairs of shoulders to pavement, reconstructions in sections, patching, regulations and finally overlay. The works also include culverts and drainage works.

Main contractor:

**ACCKL**

Client:

**Kenya National Highways Authority**

Contract period

**June 2010 to May 2011**

Contract sum:

**US\$ 4 million**

Contract status:

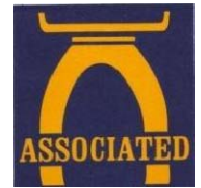
**Completed**

Value of completed to date:

**US\$ 4 million**

Physical Completion:

**100%**



## CONSTRUCTION OF NDAU SEAWALL - LAMU DISTRICT



The contract is comprised of constructing a new sea wall 1300m long along Ndau, construction of a new seawall 300m at Kizingitini including repair of existing sea wall and breakwater. Repair about 250m on Lamu seawall at Lamu. All the construction includes concrete paved walkway, staircases, mooring bollards and boat slipways along the seawall.

Main contractor:

**ACCKL**

Client:

**Ministry of Public Works**

Contract period

**June 2012 to June 2015**

Contract sum:

**US\$ 3.5 million**

Contract status:

**On going**

Value of completed to date:

**US\$ 1.6 million**

Physical Completion:

**60%**

## CONSTRUCTION OF FAZA SEA WALL AND NDAU BREAK WATER LAMU



Completed section of seawall



Seawall stair case



Break water core



### Seawall

Construction of 1400 m of seawall in Faza Island along the sea shore by excavating in water logged loose sand and backfilling in gunny bags and coral boulders to base of foundation over which a concrete foundation 1.5m x 0.5m mass concrete was cast. The sea wall is constructed in class A1 concrete blocks with a 300mm grouted coral boulder behind the wall.

A filter fabric is provided behind the wall and clean sea sand is backfilled behind the wall. The top of the wall is provided with a pedestrian pavement and drainage provisions

### Ndau break water

This is a 400m long break water built into the sea in coral boulder core 5m high over which a filter fabric is placed and large break water boulders placed over it. The lee ward side is lined with grouted boulders with a provision of stairs and bollards for marine vessel use

Main contractor:	ACCKL
Client:	Ministry of Public works
Contract period:	October 2007 to October 2009
Contract sum:	US\$5 million
Contract status:	Completed
Value completed to date:	US\$.5 m
Physical completion:	100%



## WAIYAKIWAY-REDHILL ROAD IN NAIROBI CITY COUNCIL



The contract is comprised of constructing a new road approximately 5km to gravel standards. The road sub base and base are in natural material. Works also include culverts and drainage works.

Main contractor:

**ACCKL**

Client:

**Kenya Urban Roads Authority**

Contract period

**Feb 2011 to May 2012**

Contract sum:

**US\$ 2.5 million**

Contract status:

**Completed**

Value of completed to date:

**US\$ 2.5 million**

Physical Completion:

**100%**



## CONSTRUCTION RUNDA ESTATE WHISPERS ESTATE LINK BRIDGE



The 3 cell 5m x 2m box culvert



The approach Road



Drainage works and embankment

Construction of a 3 cell box culvert 5m x 2m and 800 meters of approach road on an embankment fill in soft and hard material. The section around the box culvert location was swampy ground that required substantial boulder bottoming to improve on the bearing capacity. The pavement structure is hand packed stone sub base and base and asphaltic concrete wearing course.

Drainage structures comprise of pipe culverts Invert block drains and slotted drains.

Main contractor: ACCKL

Client: Ministry of Roads

Contract period: June 2007 to June 2008

Contract sum: US\$ 2million

Contract status: Completed 2008

## CONSTRUCTION OF MASALANI SUSPENSION BRIDGE



Concrete construction to pier base and stem



Temporary trestles to deck construction



Stiffening girder installation



Cross beam and troughing installation

This is a 136m long self anchored steel suspension bridge built across river Tana. The foundation is in concrete bored piles 600mm diameter 25m below pile cap. The support structures of abutments and pier are in reinforced concrete.

The stiffener girders, bracings and towers are in steel and the main cables comprise of 7 no. 45mm diameter fully locked coil ropes.

The deck is in steel troughing 9mm thick with 300mm concrete topping.

Fabrication drawings for the Bridge steel was done by associated and fabrication done in Dubai. Cables design were done by Associated and manufactured in UK and Germany. Erection done by Associated Construction Co. Ltd using local resources.

Main contractor : ACCKL

Client: Ministry of Roads and Public works

Contract period : June 2004 to July 2007

Contract sum: US\$ 8.6 million

Contract status: Completed 2007



Tower installation



Cable installation



The completed bridge deck

### Major construction high lights

The foundations were originally in steel H sections but we offered an alternative and designed for 600mm concrete bored piles.

The construction mode for the bridge required that the deck be erected first before installation of cable and transfer of loading from temporary supports to cable system. An elaborate temporary support was designed, fabricated and installed by piling into the river to provide for this support. The system included a jacking frame for camber provision and load transfer

The steel for the deck beams and towers were to be sourced partly from an old bridge and partly new parts. The old parts were unserviceable and a complete use of new parts was required. There being no design for the bridge we undertook to do the design, prepare fabrication drawing and fabricated the steel components

The construction design and the erection of the bridge deck, cables and hanger bars was done entirely by local staff and resources.

All temporary work were locally fabricated and installed on the site by the main contractor.

## REHABILITATION OF MOKOWE AND MANDA JETTIES LAMU



Driving concrete sheet piles



Rehabilitated jetty with fenders



Pontoon



Breaking of jetty for reconstruction

Rehabilitation of a dilapidated marine jetty by reconstruction of damaged deck and staircase concrete due to steel rust, replacement of worn out fenders. Application of protective epoxy treatment to concrete surfaces.

Construction of new steel pontoons and approach steel ladders

Protection works by way of piling concrete sheet piles to a damaged section of sea wall.

Construction of sea wall 200meter long with foundation in coral boulders over which a concrete foundation 1.5m x 0.5m mass concrete. The sea wall is constructed in class A1 concrete blocks with a 300mm grouted coral boulder behind the wall. and filter fabric behind the wall and clean sea sand is backfilled behind the wall. The top of the wall is provided with a pedestrian pavement and drainage provisions

Main contractor: ACCKL

Client: Ministry of Public works

Contract period: July 2006 to January 2008

Contract sum: US\$3 million

Contract status: Complete 2008



## KENYA SHELL: RAILWAY SIDING UPGRADE AT MOMBASA TERMINAL



Turnout track laid on base concrete



Plain track cast in topping concrete



Turnout track cast in topping concrete

Construction of a 300 meter long Rail Track siding with a 60 meter loop line all in a reinforced concrete base to the LPG siding for Kenya Shell/Bp Ltd in Shimanzi Mombasa. The works comprised of removal of existing rail siding, excavating ground to level and concreting a slab on grade with the rails in place.

The track included plain track. At grade crossing track and a turnout all provided in concrete base.

The works also comprised provision ducts for crossing of services and drainage structures.

Main contractor: ACCKL

Client: Kenya Shell BP Ltd

Contract period: January 2007 to  
December 2007

Contract sum: US\$ 0.95 million

Contract status: Complete 2006

## LAMU SEAWALLS SHEILLA BEACH EXTENSION LAMU DISTRICT



Driving Concrete sheet piles



Completed seawall section concrete blocks



Completed sea wall section armour blocks

Construction of 200 m of seawall in Faza island along the sea shore by excavating in water logged loose sand and backfilling in gunny bags and coral boulders to base of foundation over which a concrete foundation 1.5m x 0.5m mass concrete was cast. The sea wall is constructed in class A1 concrete blocks with a 300mm grouted coral boulder behind the wall.

A filter fabric is provided behind the wall and clean sea sand is backfilled behind the wall. The top of the wall is provided with a pedestrian pavement and drainage provisions

Protection works to existing seawall by driving 3.5m long precast concrete sheet piles over an 80 m section

Main contractor: ACCKL

Client: Ministry of Public works

Contract period: October 2004 to December 2005

Contract sum: US\$1.5 million

Contract status: Complete 2006



## IMPROVEMENTS TO RAILWAY SIDINGS AT TOTAL DEPOT MOMBASA



Rafted Track turnout laid in concrete



Track in concrete



Steel reinforcement to base concrete

The works involved the removal of the old railway siding at the terminal in Mombasa construction of a temporary diversion, remedying of a difficult soggy foundation, provision of a reinforced concrete raft on a compacted hardcore base, laying of the rail track and all accessories the length of track was 300m long. Provision of rail track turnout and drainage and hard standing.

Main contractor: ACCKL

Client: Total Kenya Ltd.

Contract period: February 2000 to July 2000

Contract sum: US\$ 0.15 million

Contract status: Complete 2003





The works involved the rehabilitation and reconstruction to gravel standard rural roads and bridges in Bungoma district western Kenya. The scope of the works included gabion protection works, reconstruction of bridge embankments and protection of abutments, aprons and approaches, earthworks reconstruction of road verges, provision of gravel base and wearing course and drainage system.

The roads covered were D279, C42, D277, and D283 all totalling 59 km

Main contractor: ACCKL

Client: Office of President  
El nino emergency  
project.

Contract period: July 2000 to April  
2001

Contract sum: US\$ 3.15 million

Contract status: Complete 2001



The works involved the rehabilitation and reconstruction to gravel standard rural roads and bridges in Bungoma district western Kenya. The scope of the works included gabion protection works, reconstruction of bridge embankments and protection of abutments, aprons and approaches, earthworks reconstruction of road verges, provision of gravel base and wearing course and drainage system.

The roads covered were C32, D281, D275, D278, D270, E1239, E1237, E308, and E309 all totalling 67Km

Main contractor: ACCKL

Client: Office of President  
El nino emergency  
project.

Contract period: July 2000 to April  
2001

Contract sum: US\$ 2.65 million

Contract status: Complete 2001

CONSTRUCTION AND REHABILITATION OF TOWN ROADS IN BUNGOMA, BUSIA AND KAKAMEGA. KENYA URBAN TRANSPORT INFRASTRUCTURE PROJECT(KUTIP): PACKAGE 14



The works comprised of the upgrading of existing earth gravel roads to bituminous standard involving extensive earthworks, provision of natural gravel sub base stabilized gravel base and asphaltic concrete wearing course. The works also included rehabilitation of existing worn out bituminous road surfaces with premix and surface dressing, provision of drainage systems, bus bays, cycle tracks and road furniture.

The total length of roads were

Kakamega: 12 roads 11 km

Bungoma: 10 roads 5 km

Busia: 3 roads 4.4 km

Main contractor: ACCKL

Client: Ministry of Local Government

Contract period: December 1998 to March 2000

Contract sum: US\$ 8.59 million

Contract status: Complete 1998

CONSTRUCTION AND REHABILITATION OF TOWN ROADS IN HOMA BAY AND KISII ROADS: KENYA URBAN TRANSPORT INFRASTRUCTURE PROJECT(KUTIP): PACKAGE 15



The works comprised of the upgrading of existing earth gravel roads to bituminous standard involving extensive earthworks in expansive clays and red coffee soils, provision of natural gravel sub base stabilized gravel base and asphaltic concrete wearing course. The works also included rehabilitation of existing worn out bituminous road surfaces with premix and surface dressing, provision of drainage systems, bus bays, cycle tracks and road furniture.

The total length of roads were

Kisii: 10 roads 8.5 km

Homa Bay: 5 roads 4.5 km

Main contractor: ACCKL

Client: Ministry of Local Government

Contract period: December 1998 to March 2000

Contract sum: US\$ 6.05 million

Contract status: Complete 1999

## EMMERGENCY REPAIR WORKS KIBWEZI SECTION THANGE BRIDGE



Twin cell 1200mm pipe culvert



Reinforcement to top slab box culvert



The completed 2 cell 4.5m x 4.5m BC



Cement stabilizing of approach road

The works were as result of flood damage to the road causing an insufficient pipe culvert to be overloaded with storm flow leading to damage of the road section.

The works comprised of construction of a diversion and the construction of a twin cell 4.5m x 4.5m box culvert complete with wing walls and backfilling to formation level, gabion protection works construction and maintenance of the road section to bitumen finish.

Main Contractor: ACCKL

Client: Ministry of Roads and Public works.

Contract period: June 1998 to October 1998

Contract sum: US\$ 2.5 million

Contract status: Complete 1998

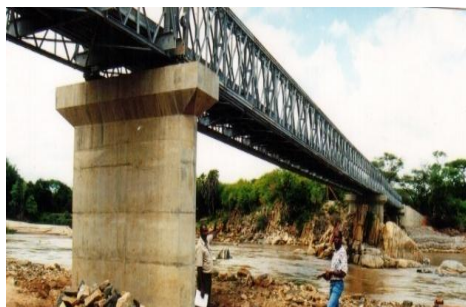
## CONSTRUCTION OF ADAMSON FALLS BRIDGE AND APPROACH ROADS



Head treatment to bored piles



Concrete construction pier



The Bailey bridge



The Bailey bridge

The works comprised of the construction of 90 meter steel Bailey bridge on reinforced concrete abutments and piers in Meru National park across the Tana River.

The foundation were concrete pad foundations on rock except for one pier whose foundation was on 600mm diameter concrete bored piles

There were road approaches 5 km long and extensive river and bridge protection works

Main Contractor: ACCKL

Client: Kenya Wild Life Services

Consultant: Churchi Githinji and associates

Contract period: January 1998 to November 1998

Contract sum: US\$ 2.5 million

Contract status: Complete 1998



Concrete bored piles



Concrete construction to pier



Complete Piers South end

Construction of 6 kilometres of approach roads to gravel standard in earth fill 30,000m<sup>3</sup>. The works comprised of the excavations and construction of bridge pile and pad foundations, pile head treatment and construction of a reinforced concrete abutments and piers and related river training works.

The main bridge foundations were on 600mm diameter concrete bored piles

Main contractor: ACCKL

Client: Ministry of Roads and Public works

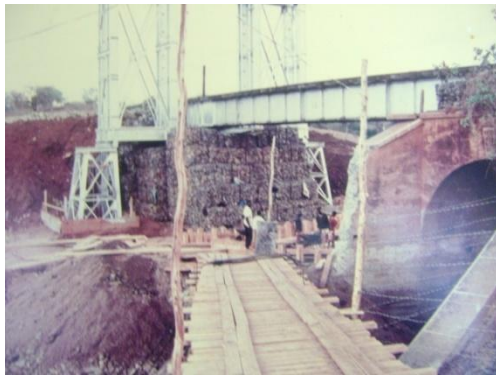
Contract period: December 1990 to December 1992

Contract sum: US\$ 1.9 million

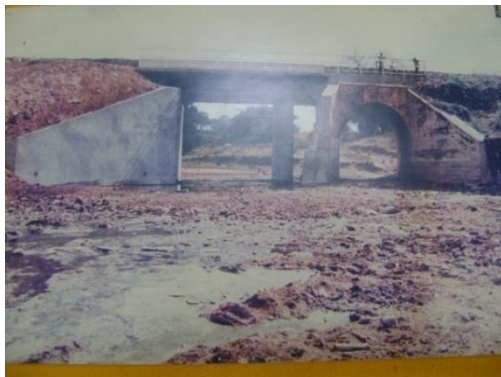
Contract status: Complete 1995



## CONSTRUCTION OF NGAI NDEITHYA BRIDGE



Bridge Construction under rail traffic



The completed structure

Following heavy rains floods damaged an approach embankment to an arch culvert for a railway line. This resulted in an accident of a passenger killing several people.

A temporary bridge was constructed over the damaged area to facilitate flow of rail traffic and construction of a permanent bridge.

A bridge was constructed to increase the opening of the river which was originally an arch culvert. The works comprised of excavation in soft and hard material, provision of false work to protect existing temporary rail track provisions and construction of a reinforced concrete bridge on pier and abutment.

Upstream of the bridge extensive earthworks to river training works was carried out including diversions and cofferdams.

Main Contractor:	ACCKL
Client:	Kenya Railways Corporation
Contract period:	October 1993 to May 1994
Contract sum:	US\$ 1.4 million
Contract status:	Complete 1994



## CONSTRUCTION OF FOOT BRIDGES ON THIKA ROAD AND WESTLANDS



Working under traffic



Hoisting of precast girders



The completed structure

Due to heavy pedestrian traffic over very busy and fast roads foot bridges were to be constructed across dual carriage roads on Thika road and Waiyaki way in Nairobi.

Two bridges were constructed of 22m length.

The construction comprised of reinforced concrete piers and abutments and precast concrete deck beams with an in-situ concrete deck. The beams were cast on the ground and lifted by cranes into position. The deck was formed from permanent formworks and cast to tie into the beams.

Main Contractor: ACCKL

Client: Ministry of Roads and Public Works

Contract period: June 1997 to June 1998

Contract sum: US\$ 0.85million

Contract status: Complete 1997

## BURA BRIDGE RIVER TRAINING WORKS AND APPROACH ROADS



The bridge with protection on left



Bank protection in gabions



Bank protection and groynes

Bura Bridge is a steel cable stay bridge constructed across the Tana River on a position where the upstream side of river curves sharply into the bridge. This created dangers to erosions on the banks compromising the abutment fill and support.

The protection works comprised the construction of groynes in the Tana River to protect the river embankments and gabions on the eastern side of the river approaching the Bura Bridge.

This was done using rock fill, gabions and boulders totalling approximately 100,000 m<sup>3</sup>.

Main contractor: ACCKL

Client: Ministry of Roads and Public Works

Contract period: January 1995 to December 1996

Contract sum: US\$ 3.5million

Contract status: Complete 1990

ASSOCIATED CONSTRUCTION CO (K) LTD.

P.O BOX 31114-00600, NAIROBI-KENYA:

VEHICLES AND EQUIPMENT LIST:

All plant and equipment in this list are owned by Associated construction co. Ltd

NO	VEHICLE/MACHINE	QTY NO	TYPE/MODEL	REF/REG No.
1	MOTOR GRADER	1	MOTOR GRADER CAT 140H	
2		2	MOTOR GRADER CAT 140H	
3		3	MOTOR GRADER CAT 140H	KAX 995S
4		4	MOTOR GRADER CAT 120H	KAH 228Q
5		5	MOTOR GRADER CAT 120H	KAL 746F
6		6	MOTOR GRADER SANY	KAY 448F
7		7	MOTOR GRADER SANY	KAY 449F
8		8	MOTOR GRADER KOMATSU GD623A	KBE 176V
9		9	MOTOR GRADER KOMATSU GD623A	KBE 762V
10	DOZERS	1	DOZER CAT D8R	KBE 442M
11		2	DOZER KOMATSU D85A-21	KAZ 015L
12		3	DOZER KOMATSU D85A-18	KAZ 944A
13	EXCAVATORS	1	CAT 312B	
14		2	EXCAVATOR CAT 330B	KAY 830A
15		3	EXCAVATOR KOMATSU PC 200-3	KZQ 049
16		4	EXCAVATOR KOMATSU PC 200-6	KAZ 279V
17		5	EXCAVATOR VOLVO EC 210B LC	KBE 629V
18		6	EXCAVATOR VOLVO EC 290B LC	KBE 640V
19		7	EXCAVATOR VOLVO EC 210B LC	KBG 253M
20	DRUM ROLLERS	1	DRUM ROLLER HAMM 2420	
21		2	DRUM ROLLER BOMAG	
22		3	ROAD MARSHALL	
24		5	DRUM ROLLER DYNAPAC CC 222CF	KBJ 156E
25		6	DRUM ROLLER DYNAPAC CA 300D	KBF 030M
26		7	DRUM ROLLER DYNAPAC CA 300D	KBG 660V
27		8	DRUM ROLLER DYNAPAC HAMM 2420	KAL 164K
28		9	DRUM ROLLER HAMM 3412	KAX 236P
29		10	DRUM ROLLER HAMM 3412	KAZ 106V
30		11	DRUM ROLLER HAMM 3412	KBG 415K
31		12	DRUM ROLLER HAMM 3412	KBH 497C
32		13	DRUM ROLLER INGERSALLAND	KAG 159G
33		WHEEL LOADERS	1	WHEEL LOADER CAT 920
34	2		WHEEL LOADER HYUNDAI HL 770-7A	KBB 264F
35	TRACK SHOVELS	1	TRACK SHAVEL CAT 953	KAC 157Q
36		2	TRACK SHAVEL KOMATSU D66S	KAW 254V

NO	VEHICLE/MACHINE	QTY NO	TYPE/MODEL	REF/REG No.
37	HEAVY TRUCK TIPPERS	1	BENZ TRUCK	KAB 644P
38		2	BENZ TRUCK HIAB	KAB 645P
39		3	25 TON FUSO TIPPER TRUCK	KAE 516U
40		4	30 TON FUSO TIPPER TRUCK	KAG 673V
41		5	FUSO TRUCK HORSE	KAG 674V
42		6	30 TON FUSO TIPPER TRUCK	KAG 855R
43		7	25 TON FUSO TIPPER TRUCK	KAH 844Q
44		8	25 TON BENZ TIPPER TRUCK	KAJ 197G
45		9	25 TON BENZ TIPPER TRUCK	KAJ 761J
46		10	15 TON TATA TIPPER TRUCK	KAL 843G
47		11	15 TON TATA TIPPER TRUCK	KAL 001G
48		12	20 TON FUSO TIPPER TRUCK	KAL 895T
49		13	20 TON FUSO TRUCK L/CHASSIS	KAM 427M
50		14	30 TON FUSO TIPPER TRUCK	KAQ 404Q
51		15	30 TON FUSO TIPPER TRUCK	KAR 007P
52		16	30 TON FUSO TIPPER TRUCK	KAT 677L
53		17	30 TON FUSO TIPPER TRUCK	KAV 344M
54		18	FUSO LOW-LOADER HORSE	KAV 377M
55		19	25 TON BENZ TIPPER TRUCK	KAW 037P
56		20	30 TON FAW TIPPER TRUCK	KAX 277G
57		21	30 TON FAW TIPPER TRUCK	KAX 377G
58		22	30 TON FAW TIPPER TRUCK	KAX 968D
59		23	30 TON FAW TIPPER TRUCK	KAX 971D
60		24	20 TON FAW TIPPER TRUCK	KAZ 450T
61		25	20 TON FAW TIPPER TRUCK	KAZ 451T
62		26	FUSO WATER TANKER	KAJ 366E
63		27	25 TON BENZ TIPPER TRUCK	KBA 240K
64		28	25 TON BENZ TIPPER TRUCK	KBA 590V
65		29	25 TON BENZ TIPPER TRUCK	KBB 241K
66		30	20 TON FAW TIPPER TRUCK	KBC 325V
67		31	20 TON FAW TIPPER TRUCK	KBC 890Z
68		32	20 TON FAW TIPPER TRUCK	KBC 893Z
69		33	20 TON FAW TIPPER TRUCK	KBD 436D
70	LIGHT TRUCKS	1	3 TON FAW TRUCK	KBA 016K
71		2	MITSUBISHI 3 TON TRUCK	KBD 092Q
72		3	MITSUBISHI 3 TON TRUCK	KBG 153F
73		4	MITSUBISHI FH CANTER	KAX 667S

NO	VEHICLE/MACHINE	QTY NO	TYPE/MODEL	REF/REG No.
74	DIESEL TANKERS	1	mitsubishi 10,000 litres diesel tanker	KBG 586K
75		2	MITSUBISHI 10,000 LTRES DIESEL TANKER	KBB 590T
76	VEHICLES P/UPS	1	TOYOTA L/CRUISER 1 TON P/UP 4X4	KAa 242F
77		2	TOYOTA L/CRUISER 1 TON P/UP 4X4	KAD 693X
78		3	TOYOTA HILUX DOUBLE CAP P/UP 4X4	KAN 542R
79		4	TOYOTA HILUX DOUBLE CAP P/UP 4X4	KAN 543R
80		5	TOYOTA HILUX DOUBLE CAP P/UP 4X4	KAW 559V
81		6	TOYOTA HILUX DOUBLE CAP P/UP 4X4	KAW 560V
82		7	TOYOTA HILUX SINGLE CAP 4X4	KAY 106X
83		8	TOYOTA HILUX DOUBLE CAP P/UP 4X4	KAY 141A
84		9	TOYOTA HILUX DOUBLE CAP P/UP 4X4	KAY 142A
85		10	TOYOTA HILUX DOUBLE CAP P/UP 4X4	KAY 361X
86		11	MITSUBISHI L200 1 TON SINGLE CAP P/UP 2X4	KAY 708F
87		12	MITSUBISHI L200 1 TON SINGLE CAP P/UP 2X4	KAY 719F
88		13	MITSUBISHI L200 1 TON SINGLE CAP P/UP 2X4	KAZ 283G
89		14	MITSUBISHI L200 1 TON SINGLE CAP P/UP 2X4	KAZ 315G
90		15	MITSUBISHI L200 DOUBLE CAP P/UP 4X4	KBA 046N
91		16	MISTUBISHI L200 1 TON SINGLE CAP P/UP 4X4	KBB 808G
92		17	TOYOTA HILUX DOUBLE CAP P/UP 4X4	KBD 823P
93		18	TOYOTA HILUX DOUBLE CAP P/UP 4X4	KBD 824P
94		19	MITSUBISHI L200 DOUBLE CAP P/UP 4X4	KBD 892W
95		20	MITSUBISHI L200 DOUBLE CAP P/UP 4X4	KBD 894W
96		21	MITSUBISHI L200 DOUBLE CAP P/UP 4X4	KBD 895W
97		22	MITSUBISHI L200 DOUBLE CAP P/UP 4X4	KBD 893W
98		23	MITSUBISHI L200 1 TON SINGLE CAP P/UP 4X4	KBG 203K
99		24	MITSUBISHI L200 1 TON SINGLE CAP P/UP 4X4	KBG 204K
100		25	TOYOTA HILUX 1 TON P/UP 4X4 WD	KWF 950

NO	VEHICLE/MACHINE	QTY NO	TYPE/MODEL	REF/REG No.
101	VEHICLES SALOON	1	MITSUBISHI SALOON	KAG 193A
102		2	TOYOTA L/CRUISER VX HDJ80	KAJ 290V
103		3	TOYOTA L/CRUISER VX HDJ81	KAK 026C
104		4	TOYOTA PRADO	KAP 755C
105		5	PEUGEOT SALOON	KAQ 390G
106		6	TOYOTA L/CRUISER VX	KAS 298Y
107		7	NISSAN URVAN	KAV 196Z
108		8	TOYOTA L/CRUISER VX	KAV 290T
109		9	TOYOTA SALOON	KAW 188A
110		10	TOYOTA PRADO	KAX 258Y
111		11	MITSUBISHI LANCER	KAY 146U
112		12	TOYOTA DUET SALOON	KAY 421Z
113		13	MITSUBISHI PAJERO	KAZ 771G
114		14	FORD EVEREST SALOON	KBB 250G
115		15	VOLVO SALOON	KBD 490F
116		16	TOYOTA FORTUNER	KBH 985M
117	MOTOR BIKES	1	SAHARA MOTOR BITE	KAL 780V
118		2	MOTOR BIKE	KAY 868K
119	MISC PLANTS	1	SAKAI SOIL MIXER	KAZ 938A
120		3	FARM TRACTOR SOLANIKA	KBD 282W
121		5	CLAAS TRACTOR & SOIL STABILIZER	KAZ 297B
122		6	CLAAS TRACTOR & SOIL STABILIZER	KBH 519C
123		7	FORKLIFT - 5 tons	KJT 344
124	AIR COMPRESSORS	1	DIESEL DEUTZ ENGINE	
125		2	DIESEL DEUTZ ENGINE	
126		3	ELECTRIC 100 LITRES	
127		4	DIESEL CUMMINS C50	
128		5	DIESEL LISTER ENGINE	
129		6	PETROL HONDA ENGINE	
130		7	PETROL HONDA ENGINE	
131		8	PETROL HONDA ENGINE	
132		9	PETROL CHINESE ENGINE	
133	BIG CONCRETE MIXERS	1	WINGET 400R	
134		2	WINGET 500R NO. 1	
135		3	WINGET 500R NO. 2	
136		4	CHINESE NO. 1	
137		5	CHINESE NO. 2	
138		6	CHINESE NO. 3	

NO	VEHICLE/MACHINE	QTY NO	TYPE/MODEL	REF/REG No.
139	SMALL CONCRETE MIXERS	1	DIESEL ENGINE	NO 1
140		2	DIESEL ENGINE	NO.2
141		3	DIESEL ENGINE	NO.3
142		4	DIESEL ENGINE	NO 4
143		5	DIESEL ENGINE	NO 5
144		6	DIESEL ENGINE	G
145		7	DIESEL ENGINE	F
146	MOBILE CONCRETE MIXER	1	CAR MIX	
147	DUMPERS	1	CHINESE NO. 1	
148		2	CHINESE NO. 2	
149	PEDESTRIAN ROLLERS	1	DYNAPAC 650HP NO.1	
150		2	DYNAPAC 650HP NO. 2	
151		3	DYNAPAC 750HP	
152	GENERATORS	1	AIRMARSHALL	NO.1
153		2	DIESEL DEUTZ ENGINE	NO.2
154		3	DIESEL DEUTZ ENGINE	NO.3
155		4	DIESEL NISSAN ENGINE	NO.4
156		5	PETROL HONDA ENGINE	NO.5
157		6	PETROL HONDA ENGINE	NO.6
158		7	PETROL HONDA ENGINE	NO.7
159		8	PRAMAC 30 KVA DEUTZ ENGINE	NO.8
160	PRESSURE WASHERS	1	CHINESE	NO.1
161		2	CHINESE	NO.2
162		3	ITALIAN	NO.3
163		4	ITALIAN	NO.4
164	WATER PUMPS 2"	1	PETROL HONDA ENGINE	
165	WATER PUMPS 3"	1	PETROL HONDA ENGINE	
166		2	PETROL HONDA ENGINE	
167		3	PETROL HONDA ENGINE	
168	WATER PUMPS 4"	1	DIESEL ENGINE	
169		2	DIESEL ENGINE	
170		3	DIESEL ENGINE	
171		4	DIESEL ENGINE	
172		5	DIESEL ENGINE	
173	WATER PUMPS 6"	1	DIESEL ENGINE	
174	WATER BOWZERS	1	LOCALLY MADE	NO. 1
175		2	LOCALLY MADE	NO.2
176	FARM TRAILER	1	LOCALLY MADE	
177	BLOCK MAKING MACHINE	1	LOCALLY MADE	

NO	VEHICLE/MACHINE	QTY NO	TYPE/MODEL	REF/REG No.
178	VIBRATOR MACHINES	1	PETROL HONDA ENGINE	NO. 1
179		2	PETROL HONDA ENGINE	NO. 2
180		3	PETROL HONDA ENGINE	NO. 3
181		4	PETROL HONDA ENGINE	NO. 4
182		5	PETROL HONDA ENGINE	NO. 5
183		6	PETROL HONDA ENGINE	NO. 6
184		7	PETROL HONDA ENGINE	NO. 7
185	PLATE COMPACTOR	1	PETROL HONDA ENGINE	
186	MOTOR BOAT ENGINE	1	YAMAHA 40 HP	
187	MOTOR BOAT	1	2 X 140 HP YAMAHA ENGINES	
188	ASPHALT EQUIPMENT	1	ASPHALT PLANT SPEED CRAFTS	
189		2	PAVER DYNAPAC	
190		3	BITUMEN DISTRIBUTOR	KBD 743P
191		4	CHIPS SPREADER	KBB 342A
192		5	DYNAPAC P.T.R ROLLER	
193	LOW-LOADERS	1	HIGH BED 40 TONS CAPACITY	
194		2	LOW BED 120 TONS CPACITY	
195	CRANES	1	ROUGH TERRAIN COLES CRANE 40 TON	
196		2	CRAWLER CRANE 20 TON	
197	MARINE PILING EQUIPMENT	1	40 TON FLOATING PONTOON WITH JACKING TRESTLE	
198		2	15 TON PONTOON MOUNTED WITH PILING EQUIPMENT	
199		3	25 TON BARGE MOUNTED WITH PILING UNIT	

The total value of the plant and equipment the Company owns exceeds US\$ 10,000,000/00



# PLANT AND EQUIPMENT SELECTED PHOTOGRAPHS

## ASPHALT PLANT AND EQUIPMENT



Asphalt Plant



Bitumen sprayer



Chip spreader



Bitumen sprayer



Asphalt works



Paver

# TIPPERS



GRADERS AND STABILISERS



EXCAVATORS AND DOZERS





ROLLERS



## WHEEL LOADERS



## TRACTORS AND MIXERS



## MISCELLANEOUS MARINE AND BRIDGE EQUIPMENT



40 Ton rough terrain crane



40 ton pontoon barge with lifting trestle



20 ton pontoon with piling equipment



Piling barge in sea



Hi Hub lorry



crawler crane with diesel piling hammer





Dumpers



Low loader

